

19" RACKS AND ACCESSORIES

19" Racks and accessories

**Range;
Quality;
Availability;
Service.
At the right price.**

We at Belconn SpA believe this is the right blend to be successful. This catalogue will let you touch the range and imagine the quality. Give us a chance to demonstrate

BELCONN Team



19" Racks and accessories

WALL AND FLOOR MOUNT CABINETS "FM", "DW" and "WM" SERIES



"FM" SERIES
Floor mount



"DW" SERIES
Wall mount
"double section type"



"WM" SERIES
Standard wall mount

19" Racks and accessories

Common technical features

Racks are made from 1.2 mm thick metal sheet (*All types*).

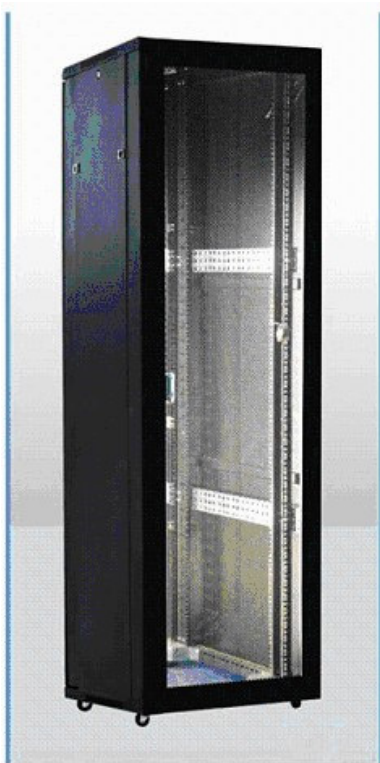
The front door is equipped with a safety tempered glass, which can be easily completely removed and replaced, if needed (*All types*).

Both front and rear doors have a locking systems and can be easily removed and installed to open left to right or viceversa ("*FM*" series). Front and rear doors can be interchanged as well ("*FM*" series).

Side panels are removable to ease access by operating on their locking system ("*DW*" and "*WM*" series).

Cable entries are available on basement and roof.

Wheels or adjustable feet can be supplied as accessories (*All types*).



19" Racks and accessories

"FM Series" FLOOR MOUNT CABINETS



PRODUCT INFORMATION

"FM series" floor mount cabinets feature an equilibrate blending of technical design and construction, a touch of stylish appearance and a high degree of reliability.

Stilish design with precision dimensions and craftsmanship

Colour: Computer gray (custom colours available on request)

Arc vented front/rear doors enable ventilated operation

Swiveling wheels and legs can be jointly installed to withstand up to 800kg maximum carrying capacity and 350kg mobile carrying capacity

Several lockable holes on top/bottom, size of the large hole at the bottom being adjustable

Easy-to-disassemble front/rear/left/right doors enable convenient operation from any side of the cabinet

Optional installation of base enables the cabinet to stay in a fixed position while meeting requirements of under-base wiring/ventilation

Material: high quality cold rolled steel

Thickness: square hole strips 2.0mm, others 1.2mm

Surface finish: de-grease, acid pickling, rust prevention process, pure water cleaning, static electricity plastic painting.

19" Racks and accessories

"FM Series" FLOOR MOUNT CABINETS



Top bore

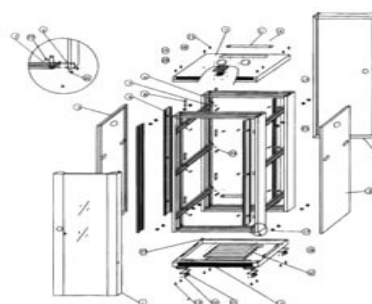


Adjustable mounting rail & mounting angle



Lockable cable entrances

Assembly Drawing of Parts



STANDARDS

Complies with ANSI/EIA RS-310-D, IEC297-2, DIN41491-PART1, DIN41-494-PART7, GB/T3047.2-9 2.

PART NUMBER	TYPE	SIZE	DIMENSION (WxDxH) mm
MCRFM42U66G	FLOOR CABINET	42 U	600 X 600 X 2000
MCRFM42U68G	FLOOR CABINET	42 U	600 X 800 X 2000
MCRFM42U88G	FLOOR CABINET	42 U	800 X 800 X 2000
MCRFM37U66G	FLOOR CABINET	37 U	600 X 600 X 1800
MCRFM37U68G	FLOOR CABINET	37 U	600 X 800 X 1800
MCRFM27U66G	FOOR CABINET	27 U	600 X 600 X 1400
MCRFM27U68G	FLOOR CABINET	27 U	600 X 800 X 1400
MCRFM22U66G	FLOOR CABINET	22 U	600 X 600 X 1200
MCRFM22U68G	FLOOR CABINET	22 U	600 X 800 X 1200
MCRFM18U66G	FLOOR CABINET	18 U	600 X 600 X 1000
MCRFM18U68G	FLOOR CABINET	18 U	600 X 800 X 1000

* **Additional sizes and customised colours available on request**

19" Racks and accessories

"DW Series" WALL MOUNT CABINET Double Section Design



PRODUCT INFORMATION

Double section structure, wall mount;

Stilish and accurate design;

Standard "computer grey" color. Custom colours available on request;

Optional support feet for floor installation

Removable side doors with quick opening mechanism allow for easy installation and maintaining;

Optional cable entries from top and bottom plate;

Cooling fans available;

Withstand a max load of 60 kg;

Material: high quality cold rolled steel

Thickness: square hole strips 2.0mm, others 1.2mm

Surface finish: de-grease, acid pickling, rust prevention process, pure water cleaning, static electricity plastic painting.

19" Racks and accessories

"DW Series" WALL MOUNT CABINET Double Section Design

STANDARDS

Complies with ANSI/EIA RS-310-D, IEC297-2, DIN41491-PART1, DIN4149-4-PART7, GB/T3047.2-9 2.

PART NUMBER	TYPE	SIZE	DIMENSION (WxDxH) mm
MCRDW026U65G	DOUBLE SECTION WALL MOUNT CABINET	6 U	600 X 550 X 368
MCRDW029U65G	DOUBLE SECTION WALL MOUNT CABINET	9 U	600 X 550 X 501
MCRDW0212U65G	DOUBLE SECTION WALL MOUNT CABINET	12 U	600 X 550 X 635
MCRDW0215U65G	DOUBLE SECTION WALL MOUNT CABINET	15 U	600 X 550 X 770
MCRDW0218U65G	DOUBLE SECTION WALL MOUNT CABINET	18 U	600 X 550 X 900
MCRDW0222U65G	DOUBLE SECTION WALL MOUNT CABINET	22 U	600 X 550 X 1080

* **Additional sizes and customised colours available on request**

19" Racks and accessories

"WM series" WALL MOUNT CABINET



PRODUCT INFORMATION

Nice design and improved functionality;

Standard "computer grey" colour (custom colours available on request)

Removable side doors with quick opening mechanism allow for easy installation and maintaining;

Top and bottom cable entries;

Cooling fans available;

Withstand a max load of 60 kg;

Material: high quality cold rolled steel

Thickness: square hole strips 2.0mm, others 1.2mm

Surface finish: de-grease, acid pickling, rust prevention process, pure water cleaning, static electricity plastic painting.

STANDARDS

Complies with ANSI/EIA RS-310-D, IEC297-2, DIN41491-PART1, DIN4149-4-PART7, GB/T3047.2-9 2.

19" Racks and accessories

"WM series" WALL MOUNT CABINET

Material: SPCC quality cold rolled steel

Thickness: square hole strips 1.2mm, others 1.0mm

Surface finish: degrease, acid pickling, rust prevention and parkerizing, pure water cleaning, static electricity plastic painting



No side door lock (standard)



Side door lock (optional)



Removable side doors



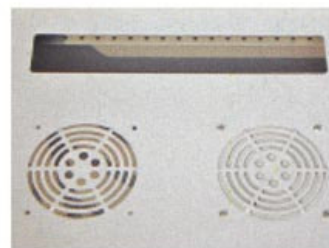
Panel for mounting



Easy mounting



Adjustable mounting rails



Lockable fan holes and cable entrance



Inside fixation to prevent steal



Cable entrance

PART NUMBER	TYPE	SIZE	DIMENSION (WxDwH) mm
MCRWM216U45G	WALL CABINET	6 U	600 X 450 X 368
MCRWM219U45G	WALL CABINET	9 U	600 X 450 X 500
MCRWM2112U45G	WALL CABINET	12 U	600 X 450 X 635
MCRWM2115U45G	WALL CABINET	15 U	600 X 450 X 770

* Additional sizes and customised colours available on request

19" Racks and accessories

RACK ACCESSORIES



CODING

MCR1VK

Q.TY/PCKG: 1

1 fan roof ventilation system, black

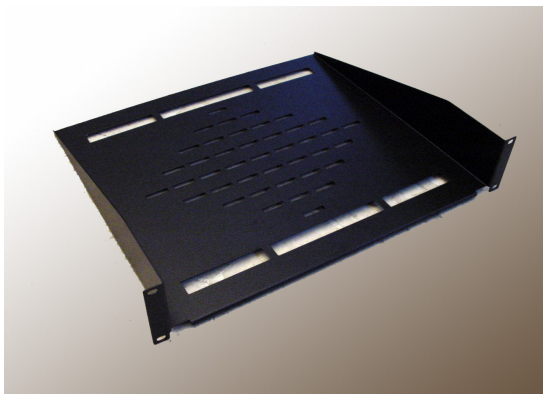


CODING

MCR8AL/ALMT

Q.TY/PCKG: 1

Mains supply dispenser, with 8 universal sockets & powers switch.
ALMT version has overcurrent switch



CODING

MCRRIP

Q.TY/PCKG: 1

Fixed shelf, 2 units, 400 mm deep, black

19" Racks and accessories



CODING

MCRRES

Q.TY/PCKG: 1

Extendable shelf, 450 mm deep, black



CODING

MCRWHL

Q.TY/PCKG: 1

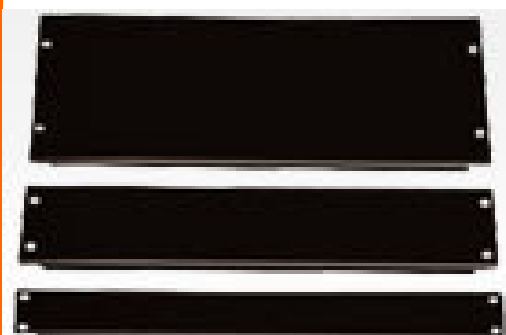
Wheel kit for FD series racks

CODING

MCRFT

Q.TY/PCKG: 1

Adjustable feet kit for FD series racks



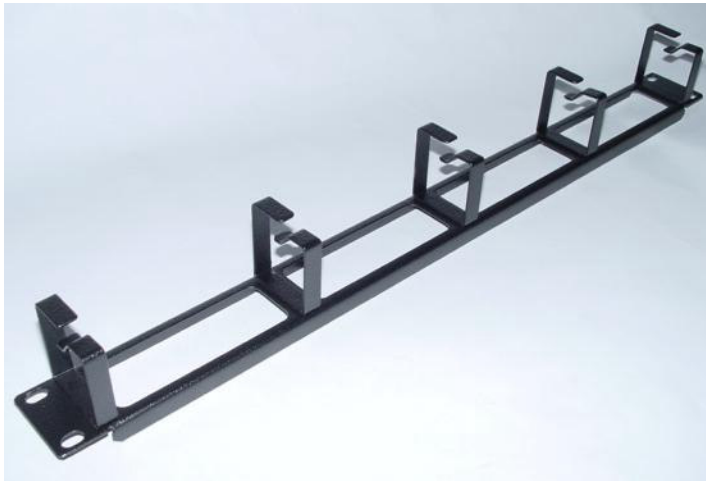
CODING

MCRMC
1U/2U/3U/5U

Q.TY/PCKG: 1

Blank panel, 1, 2, 3, 4 or 5 units

19" Racks and accessories



CODING

MCRPAS1: 1 unit
MCRPAS2: 2 units

Q.TY/PCKG: 1

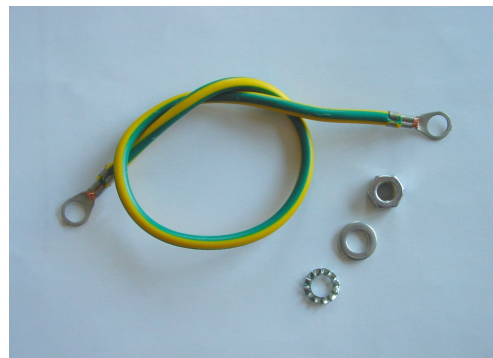
Cable management panel, black

CODING

MCRGRK: kit of 8 units

Q.TY/PCKG: 1

19" rack earth kit



CODING

MCR50KIT: kit of 50 unit

Q.TY/PCKG: 1

50 PCS Screw Kit

